

Ryan, I left you a voicemail on this as well. The area we discussed on the WebEx and highlighted below costs out like this:

Total cost ---\$3,933,798

Total homes passed ---379

Charter's contribution--\$1,137,000

County contribution?

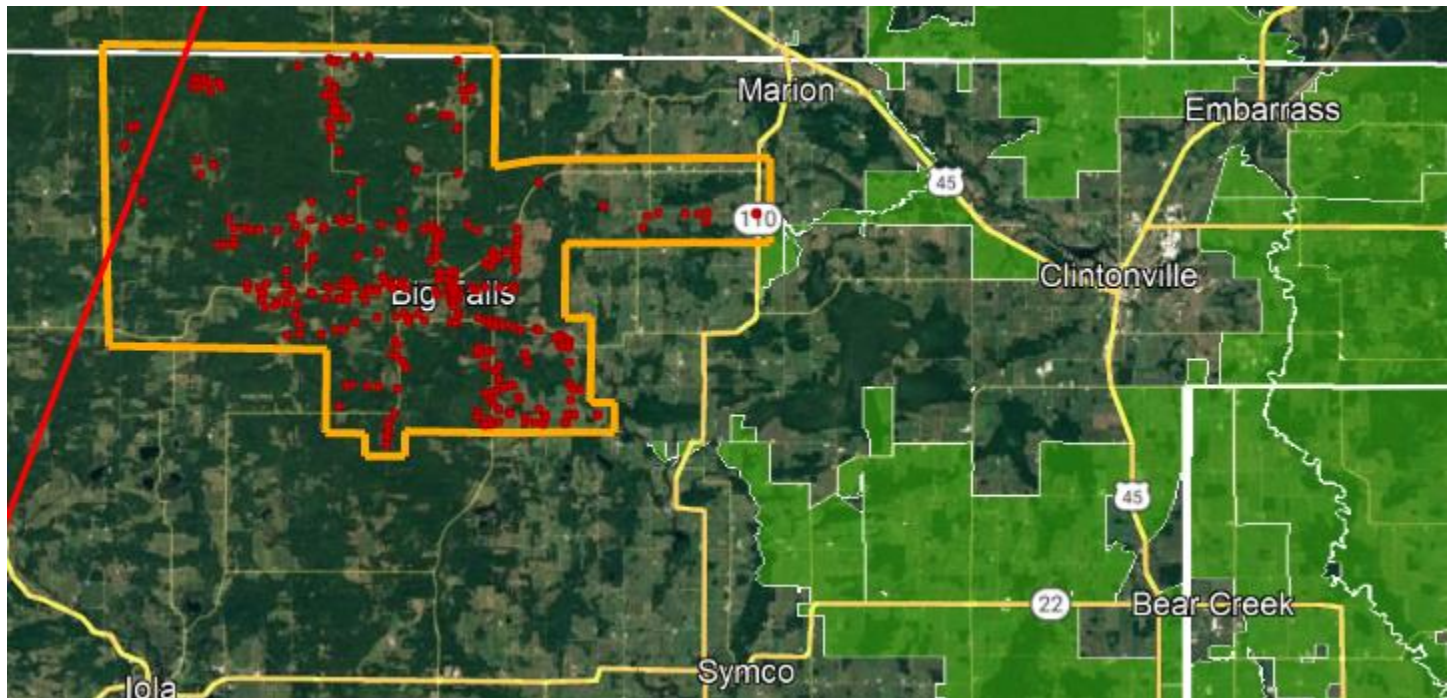
PSC Ask?

Ryan we would like to submit a partnership grant to the PSC if possible. Not sure how much the county would consider in support of this grant submission but whatever the county could contribute would be greatly appreciated and would go a long ways in the eyes of the PSC..

We are happy to have a call to discuss further in you like.

Thanks

Mike



Charter
COMMUNICATIONS

Mike Hill | Director, Government Affairs

O: 715.833.7384 | C: 715.456.9956
1201 McCann Drive | Altoona, WI 54720
E: mike.hill@charter.com

E-MAIL CONFIDENTIALITY NOTICE: The contents of this e-mail message and any attachments are intended solely for the addressee(s) and may contain confidential and/or legally privileged information. If you are not the intended recipient of this message or if this message has been addressed to you in error, please immediately alert the sender by reply e-mail and then delete this message and any attachments. If you are not the intended recipient, you are notified that any use, dissemination, distribution, copying, or storage of this message or any attachment is strictly prohibited.